

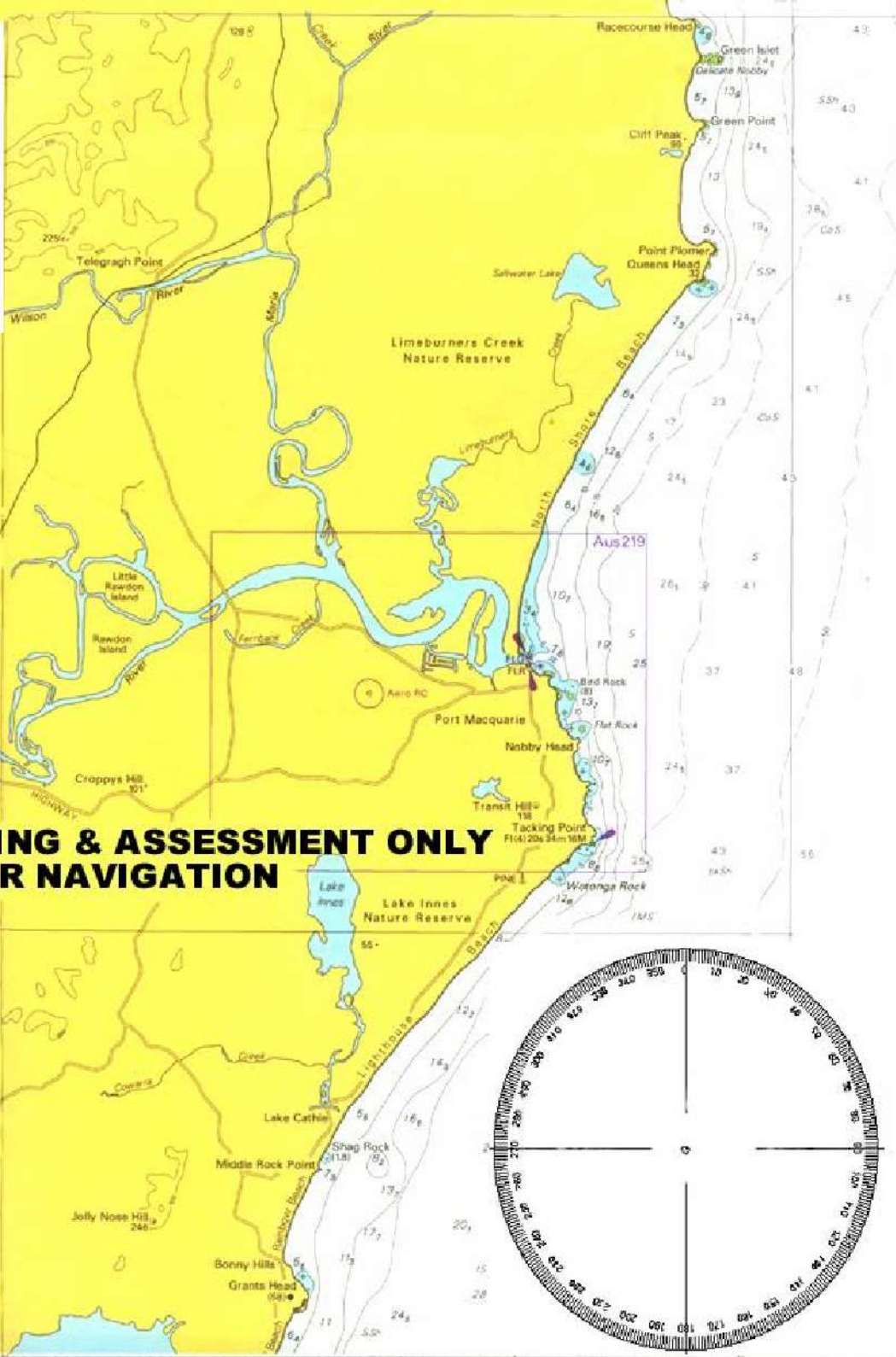
31 degrees 15 minutes South

### WARNING

FOR USE IN TRAINING & ASSESSMENT ONLY  
NOT TO BE USED FOR NAVIGATION

The Australian Hydrographic Office has not checked the information in this product and the Commonwealth accepts no liability for the accuracy of copying or for any modifications that may have been made to the information which it has supplied.

Furthermore the Commonwealth does not warrant that this product meets any regulations as an appropriate product for navigation or that it contains the latest hydrographic information available.



**FOR USE IN TRAINING & ASSESSMENT ONLY  
NOT FOR NAVIGATION**

31 degrees 37 minutes South  
152 degrees 37 minutes East

40'

45'

50'

55'