


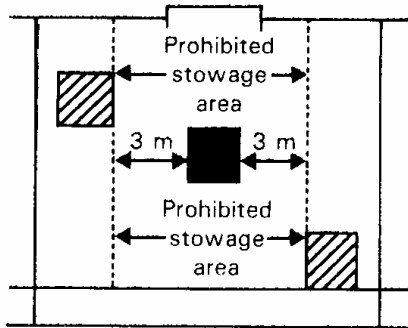


Numbers and symbols relate to the following terms as defined in this chapter:

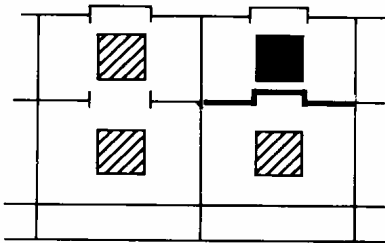
- 1 - "Away from"
- 2 - "Separated from"
- 3 - "Separated by a complete compartment or hold from"
- 4 - "Separated longitudinally by an intervening complete compartment or hold from"
- X - The segregation, if any, is shown in the Dangerous Goods List
- * - See 7.2.7.2 of this chapter.

- (1) Reference *package* 
- (2) *Package* containing incompatible goods 
- (3) Deck resistant to fire and liquid 

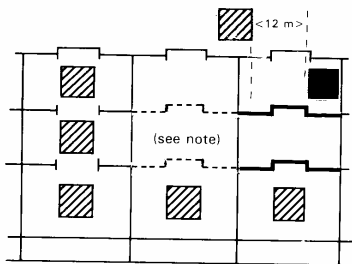
AWAY FROM



SEPARATED FROM



SEPARATED BY COMPLETE COMPARTMENT OR HOLD SPACE



NOTE: One of the two decks must be resistant to fire and liquid.